



1) Zahlen schreiben

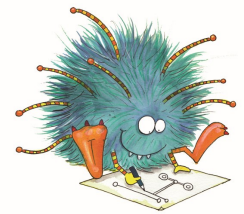
Schreibe die Zahlen auf.

Schreibe richtig in die Stellenwerttafel.



	M	HT	ZT	T	H	Z	E	
6H 5T 3E 2HT 8ZT 9Z		2	8	5	6	9	3	285693
4T 3ZT 1H 0E 5Z 7HT								
9Z 7HT 4H 0ZT 1T 3E								
4E 0H 6HT 7ZT 2Z 0T								
9HT 5T 0ZT 0Z 0E 6H								
1T 0H 1HT 0E 0ZT 1Z								
4T 1E 6HT 2Z 5ZT 3H								
3ZT 5HT 7Z 9H 3E 0T								
2T 7H 4ZT 6HT 1Z 2E								
9T 6H 4HT 7E 3Z 5ZT								
0H 7T 8HT 4ZT 2E 8Z								

2) Zahlen schreiben und ordnen



	M	HT	ZT	T	H	Z	E	
5Z 8T 3ZT								
7E 3T 6Z 8HT								
1H 6ZT 4HT 7E								
7ZT 6H 5Z 3E 8T								
3H 7HT 8E								
25E 8ZT 9H 7T								
17Z 6E 22T 8HT								
5E 7T 2HT								
8T 55ZT 3E 7H								
6Z 5E 8HT 16T 9H								

Ordne die Zahlen in der Tabelle der Größe nach.

Beginne mit der kleinsten Zahl.

Ordne folgende Zahlen der Größe nach:

362755, 284630, 286430, 326577, 283948, 333287, 373982, 276885,
238498



3) Zahlen schreiben und verändern



Wie heißen die Zahlen?

M	HT	ZT	T	H	Z	E
	••		•	••	•	•
	••	••	•		••	
		••		•	••	
	•		••	••		••
		•	••	•	••	

Welche Zahlen kannst du bilden, wenn du...

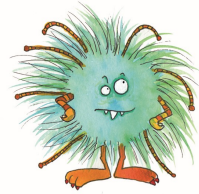
M	HT	ZT	T	H	Z	E
	•	•	•	•	•	••

... ein Plättchen dazulegst? _____

... ein Plättchen wegnimmst? _____

... ein Plättchen verschiebst? _____

4) Rechnen bis zur Million



Rechne im Kopf.

$200\,000 + 8 = \underline{\hspace{2cm}}$

$200\,000 + 80 = \underline{\hspace{2cm}}$

$200\,000 + 800 = \underline{\hspace{2cm}}$

$200\,000 + 8\,000 = \underline{\hspace{2cm}}$

$200\,000 + 80\,000 = \underline{\hspace{2cm}}$

$650\,000 + 3 = \underline{\hspace{2cm}}$

$650\,000 + 30 = \underline{\hspace{2cm}}$

$650\,000 + 300 = \underline{\hspace{2cm}}$

$650\,000 + 3\,000 = \underline{\hspace{2cm}}$

$650\,000 + 30\,000 = \underline{\hspace{2cm}}$

$790\,000 + 50\,000 = \underline{\hspace{2cm}}$

$790\,000 + 5\,000 = \underline{\hspace{2cm}}$

$790\,000 + 500 = \underline{\hspace{2cm}}$

$790\,000 + 50 = \underline{\hspace{2cm}}$

$790\,000 + 5 = \underline{\hspace{2cm}}$

$470\,000 + 90\,000 = \underline{\hspace{2cm}}$

$470\,000 + 9\,000 = \underline{\hspace{2cm}}$

$470\,000 + 900 = \underline{\hspace{2cm}}$

$470\,000 + 90 = \underline{\hspace{2cm}}$

$470\,000 + 9 = \underline{\hspace{2cm}}$

$453 + 8 = \underline{\hspace{2cm}}$

$1\,453 + 8 = \underline{\hspace{2cm}}$

$31\,453 + 8 = \underline{\hspace{2cm}}$

$931\,453 + 8 = \underline{\hspace{2cm}}$

$648 + 40 = \underline{\hspace{2cm}}$

$2\,648 + 40 = \underline{\hspace{2cm}}$

$72\,648 + 40 = \underline{\hspace{2cm}}$

$172\,648 + 40 = \underline{\hspace{2cm}}$

$115\,400 + 800 = \underline{\hspace{2cm}}$

$115\,400 + 880 = \underline{\hspace{2cm}}$

$115\,400 + 888 = \underline{\hspace{2cm}}$

$637\,200 + 400 = \underline{\hspace{2cm}}$

$637\,200 + 440 = \underline{\hspace{2cm}}$

$637\,200 + 444 = \underline{\hspace{2cm}}$

$64\,000 + \underline{\hspace{2cm}} = 100\,000$

$57\,000 + \underline{\hspace{2cm}} = 100\,000$

$82\,400 + \underline{\hspace{2cm}} = 100\,000$

$29\,100 + \underline{\hspace{2cm}} = 100\,000$

$732\,000 + \underline{\hspace{2cm}} = 1\,000\,000$

$529\,000 + \underline{\hspace{2cm}} = 1\,000\,000$

$842\,600 + \underline{\hspace{2cm}} = 1\,000\,000$

$495\,300 + \underline{\hspace{2cm}} = 1\,000\,000$



$645\,000 - 30\,000 = \underline{\hspace{2cm}}$

$645\,000 - 3\,000 = \underline{\hspace{2cm}}$

$645\,000 - 300 = \underline{\hspace{2cm}}$

$645\,000 - 30 = \underline{\hspace{2cm}}$

$645\,000 - 3 = \underline{\hspace{2cm}}$

$780\,000 - 80\,000 = \underline{\hspace{2cm}}$

$780\,000 - 8\,000 = \underline{\hspace{2cm}}$

$780\,000 - 800 = \underline{\hspace{2cm}}$

$780\,000 - 80 = \underline{\hspace{2cm}}$

$780\,000 - 8 = \underline{\hspace{2cm}}$

$231\,000 - 50\,000 = \underline{\hspace{2cm}}$

$231\,000 - 5\,000 = \underline{\hspace{2cm}}$

$231\,000 - 500 = \underline{\hspace{2cm}}$

$231\,000 - 50 = \underline{\hspace{2cm}}$

$231\,000 - 5 = \underline{\hspace{2cm}}$

$552\,000 - 70\,000 = \underline{\hspace{2cm}}$

$552\,000 - 7\,000 = \underline{\hspace{2cm}}$

$552\,000 - 700 = \underline{\hspace{2cm}}$

$552\,000 - 70 = \underline{\hspace{2cm}}$

$552\,000 - 7 = \underline{\hspace{2cm}}$

$372 - 6 = \underline{\hspace{2cm}}$

$5\,372 - 6 = \underline{\hspace{2cm}}$

$45\,372 - 6 = \underline{\hspace{2cm}}$

$745\,372 - 6 = \underline{\hspace{2cm}}$

$179 - 40 = \underline{\hspace{2cm}}$

$4\,179 - 40 = \underline{\hspace{2cm}}$

$84\,179 - 40 = \underline{\hspace{2cm}}$

$384\,179 - 40 = \underline{\hspace{2cm}}$

$746\,700 - 500 = \underline{\hspace{2cm}}$

$746\,700 - 550 = \underline{\hspace{2cm}}$

$746\,700 - 555 = \underline{\hspace{2cm}}$

$193\,800 - 900 = \underline{\hspace{2cm}}$

$193\,800 - 990 = \underline{\hspace{2cm}}$

$193\,800 - 999 = \underline{\hspace{2cm}}$

$264\,200 - 300 = \underline{\hspace{2cm}}$

$264\,200 - 330 = \underline{\hspace{2cm}}$

$264\,200 - 333 = \underline{\hspace{2cm}}$

$581\,300 - 600 = \underline{\hspace{2cm}}$

$581\,300 - 660 = \underline{\hspace{2cm}}$

$581\,300 - 666 = \underline{\hspace{2cm}}$

$3 \cdot 8 = \underline{\hspace{2cm}}$

$3 \cdot 80 = \underline{\hspace{2cm}}$

$3 \cdot 800 = \underline{\hspace{2cm}}$

$3 \cdot 8000 = \underline{\hspace{2cm}}$

$3 \cdot 80000 = \underline{\hspace{2cm}}$

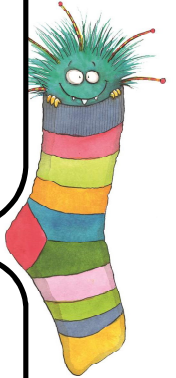
$7 \cdot 4 = \underline{\hspace{2cm}}$

$7 \cdot 40 = \underline{\hspace{2cm}}$

$7 \cdot 400 = \underline{\hspace{2cm}}$

$7 \cdot 4000 = \underline{\hspace{2cm}}$

$7 \cdot 40000 = \underline{\hspace{2cm}}$



$70 \cdot 5 = \underline{\hspace{2cm}}$

$70 \cdot 50 = \underline{\hspace{2cm}}$

$70 \cdot 500 = \underline{\hspace{2cm}}$

$70 \cdot 5000 = \underline{\hspace{2cm}}$

$60 \cdot 9 = \underline{\hspace{2cm}}$

$60 \cdot 90 = \underline{\hspace{2cm}}$

$60 \cdot 900 = \underline{\hspace{2cm}}$

$60 \cdot 9000 = \underline{\hspace{2cm}}$

$4 \cdot 30000 = \underline{\hspace{2cm}}$

$40 \cdot 3000 = \underline{\hspace{2cm}}$

$400 \cdot 300 = \underline{\hspace{2cm}}$

$4000 \cdot 30 = \underline{\hspace{2cm}}$

$40000 \cdot 3 = \underline{\hspace{2cm}}$

$70000 \cdot 7 = \underline{\hspace{2cm}}$

$7000 \cdot 70 = \underline{\hspace{2cm}}$

$700 \cdot 700 = \underline{\hspace{2cm}}$

$70 \cdot 7000 = \underline{\hspace{2cm}}$

$7 \cdot 70000 = \underline{\hspace{2cm}}$

$\underline{\hspace{2cm}} \cdot \underline{\hspace{2cm}} = 360000$

$\underline{\hspace{2cm}} \cdot \underline{\hspace{2cm}} = 360000$

$\underline{\hspace{2cm}} \cdot \underline{\hspace{2cm}} = 360000$

$\underline{\hspace{2cm}} \cdot \underline{\hspace{2cm}} = 360000$

$\underline{\hspace{2cm}} \cdot \underline{\hspace{2cm}} = 24000$

$\underline{\hspace{2cm}} \cdot \underline{\hspace{2cm}} = 24000$

$\underline{\hspace{2cm}} \cdot \underline{\hspace{2cm}} = 24000$

$\underline{\hspace{2cm}} \cdot \underline{\hspace{2cm}} = 24000$

$\underline{\hspace{2cm}} \cdot \underline{\hspace{2cm}} = 42000$

$\underline{\hspace{2cm}} \cdot \underline{\hspace{2cm}} = 42000$

$\underline{\hspace{2cm}} \cdot \underline{\hspace{2cm}} = 42000$

$\underline{\hspace{2cm}} \cdot \underline{\hspace{2cm}} = 42000$

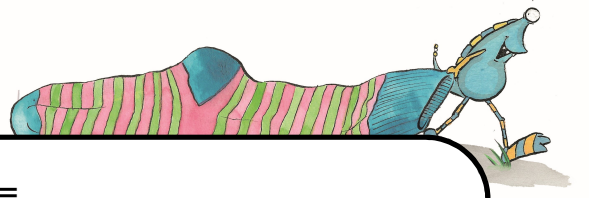
$\underline{\hspace{2cm}} \cdot \underline{\hspace{2cm}} = 200000$

$\underline{\hspace{2cm}} \cdot \underline{\hspace{2cm}} = 200000$

$\underline{\hspace{2cm}} \cdot \underline{\hspace{2cm}} = 200000$

$\underline{\hspace{2cm}} \cdot \underline{\hspace{2cm}} = 200000$





$45 : 9 = \underline{\hspace{2cm}}$

$450 : 9 = \underline{\hspace{2cm}}$

$4500 : 9 = \underline{\hspace{2cm}}$

$45000 : 9 = \underline{\hspace{2cm}}$

$450000 : 9 = \underline{\hspace{2cm}}$

$63 : 7 = \underline{\hspace{2cm}}$

$630 : 7 = \underline{\hspace{2cm}}$

$6300 : 7 = \underline{\hspace{2cm}}$

$63000 : 7 = \underline{\hspace{2cm}}$

$630000 : 7 = \underline{\hspace{2cm}}$

$25 : 5 = \underline{\hspace{2cm}}$

$250 : 50 = \underline{\hspace{2cm}}$

$2500 : 500 = \underline{\hspace{2cm}}$

$25000 : 5000 = \underline{\hspace{2cm}}$

$250000 : 50000 = \underline{\hspace{2cm}}$

$24 : 4 = \underline{\hspace{2cm}}$

$240 : 40 = \underline{\hspace{2cm}}$

$2400 : 400 = \underline{\hspace{2cm}}$

$24000 : 4000 = \underline{\hspace{2cm}}$

$240000 : 40000 = \underline{\hspace{2cm}}$

$360 : 6 = \underline{\hspace{2cm}}$

$360 : 90 = \underline{\hspace{2cm}}$

$2000 : 40 = \underline{\hspace{2cm}}$

$20000 : 500 = \underline{\hspace{2cm}}$

$480000 : 8000 = \underline{\hspace{2cm}}$

$1800 : 6 = \underline{\hspace{2cm}}$

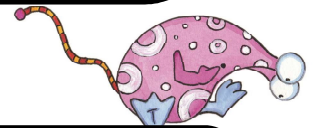
$1800 : 90 = \underline{\hspace{2cm}}$

$3000 : 500 = \underline{\hspace{2cm}}$

$30000 : 6000 = \underline{\hspace{2cm}}$

$150000 : 300 = \underline{\hspace{2cm}}$

Bilde Divisionsaufgaben ohne Rest und rechne aus.



56000

21000

4000

800

⊘

490000

360000

3000

70

_____ : _____ = _____

_____ : _____ = _____

_____ : _____ = _____

_____ : _____ = _____

6) Nachbarzahlen



Finde zunächst Vorgänger und Nachfolger.

Vorgänger	Zahl	Nachfolger
	847 230	
	493 021	
	559 429	
	245 685	
	732 948	

Nun finde zu den Zahlen die Nachbarzehner.

kl. Nachbarzehner	Zahl	gr. Nachbarzehner
	847 230	
	493 021	
	559 429	
	245 685	
	732 948	

Finde zu den Zahlen die Nachbarhunderter.

kl. Nachbarhunderter	Zahl	gr. Nachbarhunderter
	847 230	
	493 021	
	559 429	
	245 685	
	732 948	

Finde zu den Zahlen die Nachbartausender.

kl. Nachbartausender	Zahl	gr. Nachbartausender
	847 230	
	493 021	
	559 429	
	245 685	
	732 948	

Finde zu den Zahlen die Nachbarzehntausender.

kl. Nachbarzehntausender	Zahl	gr. Nachbarzehntausender
	847 230	
	493 021	
	559 429	
	245 685	
	732 948	

7) Zahlen runden



Runde auf Tausender.

Unterstreiche die Stelle, die dir sagt in welche Richtung gerundet wird.

Zahl	gerundet
1 729	
2 281	
7 499	
7 500	
6 382	

Zahl	gerundet
38 290	
92 473	
209 137	
447 392	
693 002	

Runde auf Zehntausender.

Unterstreiche die Stelle, die dir sagt in welche Richtung gerundet wird.

Zahl	gerundet
73 928	
46 392	
29 918	
48 672	
44 994	

Zahl	gerundet
493 487	
354 985	
950 368	
387 995	
195 637	

Runde auf Hunderttausender.

Unterstreiche die Stelle, die dir sagt in welche Richtung gerundet wird.

Zahl	gerundet
294 378	
470 793	
200 488	
242 986	
934 765	

Zahl	gerundet
743 075	
395 768	
507 087	
196 757	
569 348	

Vervollständige den Merksatz.

Bei _____, _____, _____, _____ und _____ wird abgerundet.

Bei _____, _____, _____, _____ und _____ wird aufgerundet.



10) Schriftliche Division



Schreibe die Schritte der Divisionsaufgabe auf und löse die Aufgabe.

$282 : 3 =$	$536 : 8 =$
<hr/>	<hr/>
<hr/>	<hr/>
$156 : 4 =$	$225 : 9 =$
<hr/>	<hr/>
<hr/>	<hr/>
$1460 : 4 =$	$3128 : 8 =$
<hr/>	<hr/>
<hr/>	<hr/>
$2379 : 3 =$	$7458 : 6 =$
<hr/>	<hr/>
<hr/>	<hr/>
$4837 : 7 =$	$3235 : 5 =$
<hr/>	<hr/>
<hr/>	<hr/>
<hr/>	<hr/>

